

PROFESSIONAL UTILITY LOCATING SERVICES

ABOUT CANADIAN LOCATORS INC.

Canadian Locators Inc. (CLI) has been in the locating business for more than 18 years, with over 300 Field Technicians, Administrative and Support personnel who provide the care, initiative, know-how, and experience to get the job done right.

CLI also employs advanced proprietary technologies which ensure online real-time processes and cost-efficient 360 degree work-flows. CLI is considered a top North American Locating Company.

OUR SERVICE

CLI has been built on engineering excellence crafted through years of pure dedication to quality, innovation, safety and a constant objective to serve the utility sector.



Utility Locating

Canadian Locators provides all types of utility locating services, using state of the art ground penetrating radar.



Locate Ticket Clearing

CLI offers clearing services to its utility clients, which is facilitated through the use of clearing center software.



Value-Added Services

CLI offers many value-added services to provide clients with 360° solutions for all their project needs.



Municipal Services

CLI provides services for municipal infrastructure by using high-efficiency technologies and systems.



PROVIDING INDUSTRY SHAPING PROGRAMS

WHAT IS LOCATING?

Utility locating is a practice in which an individual or team of trained locating technicians utilize a variety of equipment and tools in order to pin point the location of underground utilities before excavation.

WHY LOCATING IS IMPORTANT?

- Damage to utilities can cause large scale damage to private property.
- Resulting utility damage can be extremely costly to repair and replace.
- Utilities must be properly located and mapped to ensure permitting is quickly completed.
- Located utilities results in safer excavation and reduces likelihood of service disruption.

OUR SERVICE

Canadian Locators Inc. has spent years developing and evolving its processes to ensure the highest level of quality, safety and satisfaction.



Safety Program

CLI's primary objective is to continually reduce the potential for incidents that result in damage and/or injuries.



Quality Program

CLI's quality policy is to provide services that are professional and exceed the requirements of its customers.



Marketing Development

CLI has developed a training program that is 4-6 weeks long, which has been developed with multi-utility training.

WE ARE REVOLUTIONIZING LOCATING TECHNOLOGIES

CLI'S TECHNOLOGIES

CLI with the help of its technology partnership with ID Technologies, has developed a variety of in-house software & hardware to help with the completion and management of Locating Projects.

Learn More: www.idtechnologies.ca



Locatorbase

Online locate management portal that provides data, statistics, reporting, billing and auditing.



Clearing Software

Locate ticket clearing software and systems that utilize data to reduce the likelihood of damage.



Intelligent Scheduling

Logically schedule and organize work flows and crews with the interest of reducing operations costs.

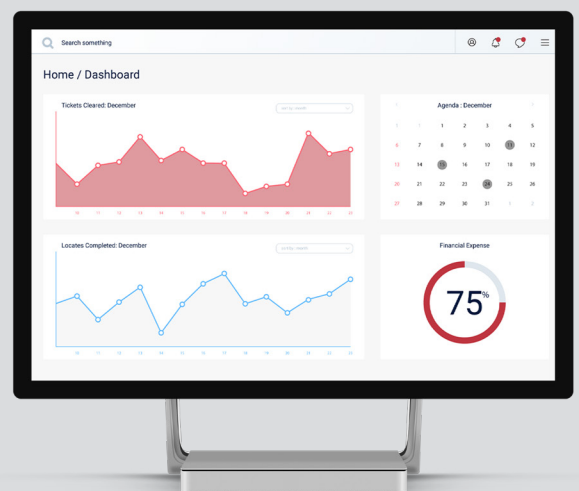


Hermes

Wireless work order management and GPS fleet tracking for cost management and technician monitoring.

FEATURES

- Full closed-loop control over locating operations and work-flow.
- Processes including payroll and hours/work auditing, billing and statistical analysis.
- Systems facilitate ticket scheduling, dispatching, completion, reporting and archiving.
- Systems can be easily accessed online at any time.



Alberta Office

Address : 6205 10th St SE, Calgary, AB T2H 2Z9
Phone : (+1) 403.263.6470
Email : alberta@canadianlocators.com

Ontario Office

Address : 33-461 Alden Rd, Markham, ON L3R 3L4
Phone : (+1) 905.479.5674
Email : ontario@canadianlocators.com